

DVB-T Amplifier Module

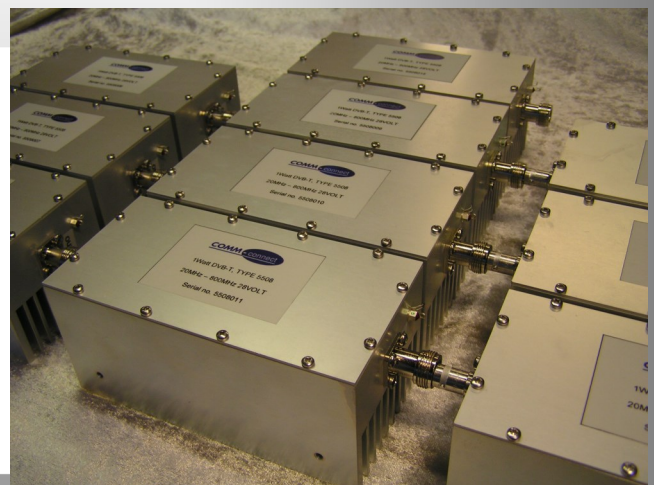
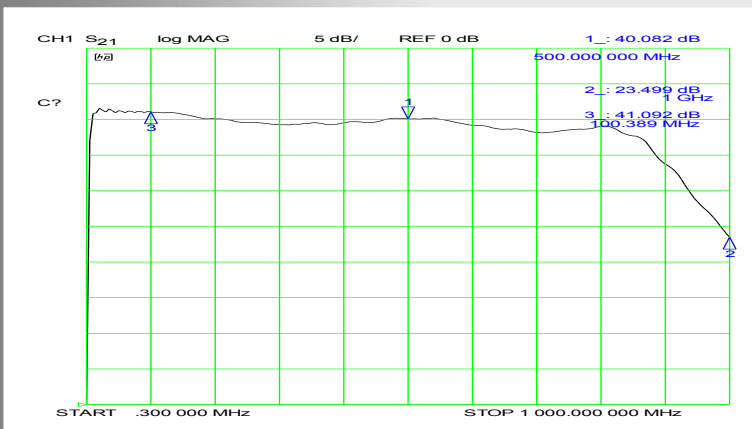
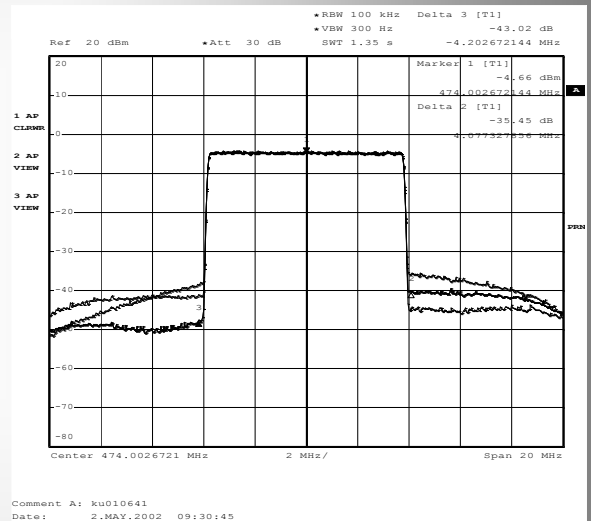
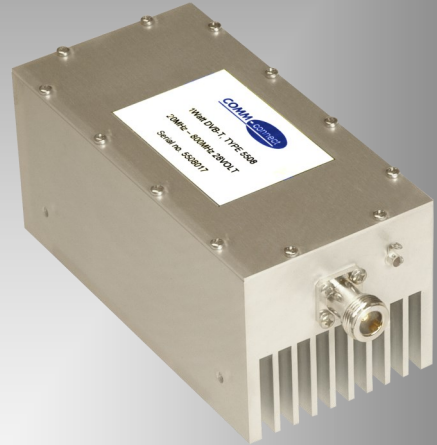
Type 5508-M

The COMM-connect DVB-T Amplifier Module is a very versatile module, for use in multiple applications, including driving High Power amplifiers or stand alone Gap-filler.

The amplifier covers both VHF & UHF bands, and can be combined with several COMM-connect filter options.

DVB-T Amplifier Module 5508-M Specifications:

Frequency range:	20 MHz to 800 MHz
Output Power RMS:	1 Watt @ >30dB SH
Output Power P1dB:	10 Watts
Input range:	-6 dBm to +6 dBm RMS
Amplitude flatness:	± 2 dB
Noise figure:	< 4 dB
SWR input/output:	<1.5:1
Power supply:	28 VDC
Current @ max. output power:	2800 mA
Temperature range:	5 to 50 °C (Heatsink)
Connector:	BNC Female / N female
Size excl. connectors:	151 x 75 x 68mm



COMM-connect A/S reserves the right to change prices and specifications without prior notice